

Belle City

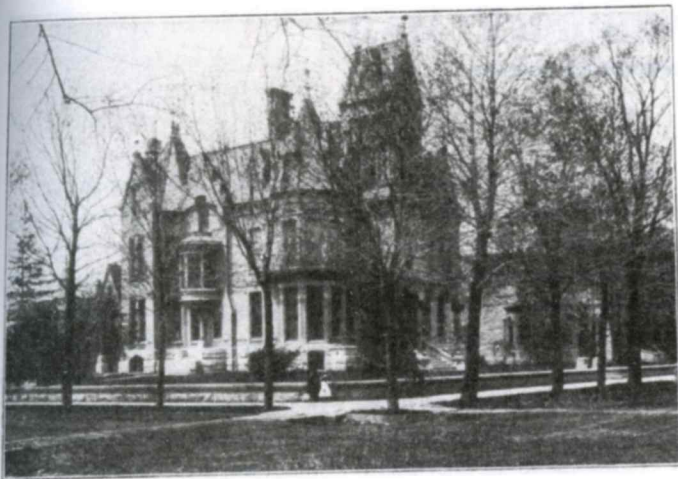
RACINE'S HOMETOWN MAGAZINE



FREE COPY
Vol. 4
No. 5
TAKE ME HOME!

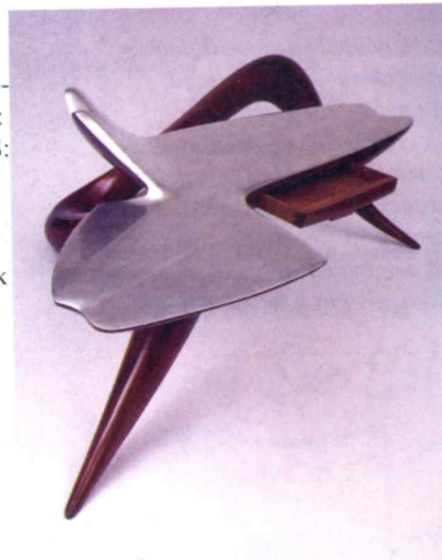
In this issue:

George the Kilted Penguin ❖ Rasmussen Diamonds - 120th Anniversary
St. Vincent de Paul Racine County ❖ Kiwanis Club of West Racine



RAM exhibits 50th anniversary of OBJECTS: USA

Racine Art Museum (RAM) is currently exhibiting OBJECTS REDUX: 50 Years After OBJECTS: USA Defined American Craft, a commemoration and exploration of OBJECTS: USA, a landmark exhibition that traveled across the country and overseas beginning in 1969. This exhibition opened Sept. 21 and will be on display through Jan. 5, 2020.



Submitted photo

cently returned from California, but as he was taken through the beautiful rooms of his palatial mansion in an invalid chair, neither love nor care could avail to bring back his health and strength.”

Flowering Crab. Erskine had left the property to his daughter, Emma Erskine Crosby who became the last family member to live there.

Three weeks later Masena B. Erskine died. Funeral services were conducted from the Erskine residence at 11th and Main, a structure of opulence rivaling that of other mansions along Racine’s “gold coast,” including the homes of Issac Taylor and Henry S. Durand.

Sometimes referred to as the Crosby-Erskine Mansion, it was torn down in the late 1940’s following failed proposals to convert it into use as a museum or a part of the library system.

Planned by Edward T. Mix of Milwaukee, the Erskine mansion had been built in 1877 at a cost of \$21,000. It’s interior boasted 11 fireplaces of marble and imported tile, 61 hand carved doors of butternut and mahogany, birds-eye maple shutters and walnut floors. Surrounding the home were gardens graced by trees from various foreign countries including an English Hawthorne and a Japanese

Margo Drummond’s interest in history began when she became involved with Preservation Racine. For 31 years, she taught high school courses on Racine History and Death and Dying, Issues of Living and Life. She wrote two books, “Blessings of Being Mortal: How a Mature Understanding of Death Can Free Us to Live Wisely and Well” and “Here’s to Your Health,” the history of brothers William and James Horlick and their company, Horlick’s Malted Milk.

This fall, the RAM exhibition series, OBJECTS REDUX—primarily drawn from the museum’s collection—showcases work made between approximately 1960 and 1985 by artists located in the United States. The shows offer a cursory look at how

craft was developing in the last part of the 20th century. The largest exhibition in the series, OBJECTS REDUX: 50 Years After OBJECTS: USA—which utilizes works borrowed from

continued on page 29

Planning a special event?

We offer: full bar

Sit-down dining or buffet style

Custom menu designed just for YOU!

Seating for 30 in our dining room

Perfect for showers, birthdays, meetings, anniversaries & more!



240 Main Street
Racine WI 53403
(262) 456-1329

www.theeggplantcafe.com

Dine in - Carry out [Find us on f](#)

ORIGINAL AND CUSTOM JEWELRY
SINCE 2004

ART
METALS
STUDIO

15 YEARS



332 MAIN STREET - RACINE, WI 53403 - 262-633-0545

WWW.ARTMETALSSTUDIO.COM

RAMAC

continued from previous page

and broad without them, and we need all types of people and industries to be involved. It is what makes chambers of commerce so fun! If you are already a RAMAC member, watch for these characteristics among the people you meet at our next event. If you are not a RAMAC member, we'd love to hear from you. Look at all the types of business people you could meet to help you navigate your way through growing your business. Reach out to RAMAC at racinechamber.com or 262.634.1931 for membership information.

Anna Clementi is the operations supervisor for Racine Area Manufacturers and Commerce (RAMAC).

RAM OBJECTS: USA

continued from page 27

area lenders as well as work from RAM's collection—focuses directly on OBJECTS: USA. RAM is partnering with the Houston Center for Contemporary Craft to celebrate the anniversary of this landmark project. In addition to collaborating on a gallery guide to commemorate this event, both institutions are concurrently hosting large exhibitions at their respective venues and utilizing work borrowed from local collections.

In the late 1960s, as society was undergoing social upheaval, studio craft—especially as it was being practiced in the United States—slowly began to undergo changes in content and form. Particularly in the 1960s and 1970s, many artists who used craft materials were pushing the boundaries of func-



tion and practical use—investigating materials and artistic concepts while beginning to overtly question social, political, environmental, and cultural issues. The public face of studio craft—as the focus of exhibitions, theoretical contemplation, and public appreciation—got a boost when SC Johnson endorsed a project to build a collection that would “promote the American object maker.”

Y

O U

N E E

D A N E

Y E E X A M

Come See Us!



262.664.7120

TwentyTwentyWI.com
10351 Highway 20 / Sturtevant



**RACINE
UNIFIED**
SCHOOL DISTRICT

**my school.
my choice.**
their journey starts with you

School Choice Fair

**Saturday, Dec. 7
9 a.m. - noon**

**Case High School
7345 Washington Ave**

www.rusd.org

