

LEFT:
Ruth Asawa
at MoMA



MoMA

NM / Santa Fe
Patina Gallery
Crafted Visions:

The Tension of Opposites
to Aug. 14
patina-gallery.com
As the Santa Fe Opera pre-
mieres *The (R)evolution of*
Steve Jobs, Patina Gallery
debuts a collection of jewelry
inspired by the opera: pieces
by 13 cutting-edge artists who
aim to create work as revolu-
tionary as the tech pioneer's.

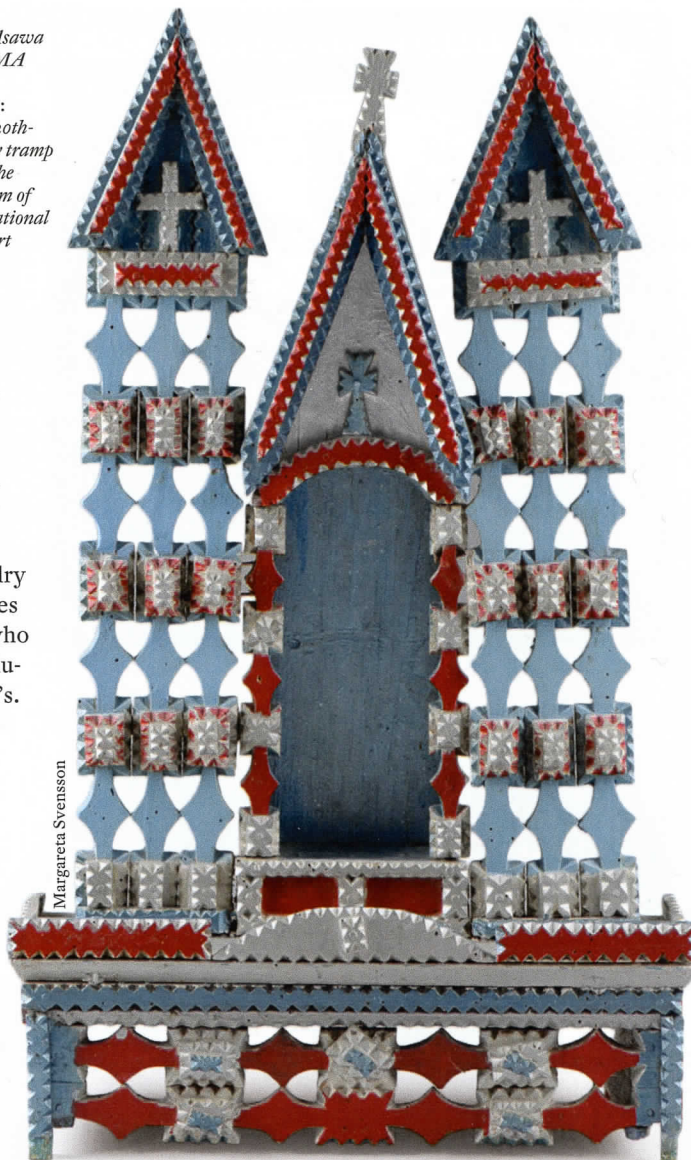
NY / New York City
The Museum of Modern Art
**Making Space: Women Art-
ists and Postwar Abstraction**

to Aug. 13
moma.org
Between World War II and
the dawn of modern feminism
in the late 1960s, women artists
were disregarded in an art
world with a *Mad Men* ethos.
Nevertheless, they persisted,
and even flourished. The
almost 100 midcentury works
here, by more than 50 artists
such as Louise Bourgeois,
Ruth Asawa, Sheila Hicks,
and Lenore Tawney, all are
drawn from the museum's col-
lection and exemplify the era's
fascination with abstraction.

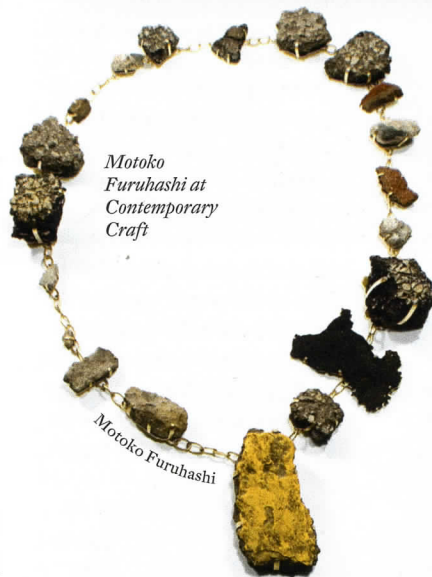
OR / Portland
Bullseye Projects
**Transformations: Ligia
Bouton, Kate Clements,
Emily Counts, Emily Nach-
ison, and Judy Tuwaletsiwa**
to Sep. 30

bullseyeprojects.com
In these artists' hands, the
mutable medium of glass is the
perfect vehicle to explore phys-
ical, metaphysical, and personal
aspects of the single constant in
the universe: change.

RIGHT:
Early 20th-
century tramp
art at the
Museum of
International
Folk Art

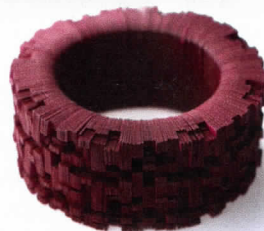


Margareta Svensson



Motoko
Furuhashi at
Contemporary
Craft

Motoko Furuhashi



ABOVE:
Genevieve
Howard
at Patina
Gallery



Michael Topa

Wendell
Castle
at RAM

PA / Pittsburgh
Contemporary Craft

Shelter: Crafting a Safe Home
Sep. 8 – Feb. 17
contemporarycraft.org
At a moment when tens of
millions of people around the
world – the most ever – are
refugees or homeless, Contem-
porary Craft shines a light on
safe housing as a basic human
right. This show includes 40
works by a dozen artists such as
Charity White, Holly Grace,
and Motoko Furuhashi.

WI / Milwaukee
Morning Glory Fine Craft Fair

Aug. 12 – 13
morninggloryfinecraftfair.com
The Wisconsin Designer Crafts
Council, which celebrates 101
years of promoting craft in the
Badger State, presents the 43rd
iteration of its juried show.

WI / Racine
Racine Art Museum

**75 at 75: Significant Works
from RAM's Collection**
Sep. 17 – Jan. 7
ramart.org
From its collection of 10,000
objects, the museum has chosen
75, each with a history and
importance of its own. Seen
together, they tell the larger
story of how the museum has
grown in the past three-
quarters of a century into a
major repository of craft.