

## ART

# s Outdoor Art Fair Sunday at Gateway

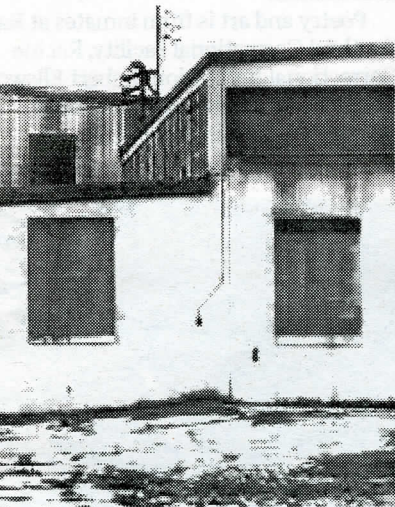
sale.  
popular feature of the fair is the silent  
on, which will be held under the  
of the building on the east side of the  
us overlooking the lake. Artwork in the  
auction is donated by the artists in the  
nd is available for auction at reduced  
s. Face painting will be available. A

scholarship raffle will also be held and  
features artistic accent tables created by  
Racine Art Guild members. Tickets will be  
sold at \$2 each or three for \$5. Money from  
the silent auction and raffle benefits the  
Racine Art Guild's scholarship program.

There will be live music, and food and  
beverages will be sold. The entertainment

lineup: Pierce McVeigh, 9-11 a.m.; Young  
Strings, 11 a.m.-1 p.m.; and Marco Jaimez,  
1:30-3:30 p.m.

The Racine Art Guild uses the fair  
donations to help local artists and students,  
and continues to promote the creation and  
appreciation of original art throughout the  
community.



## ographer is at Seebecks

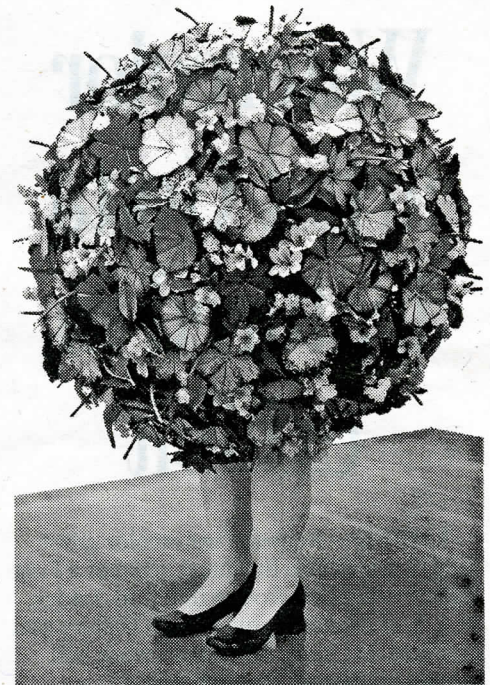
ess in post-war America.  
within her images, Coaty captures  
planes of color and rhythm, which  
t human elements and emotion.  
's award-winning photography has  
in many juried exhibits throughout  
onsin as well as in commercial  
s throughout the Midwest.  
ebecks is open from 10 a.m. to  
a. Monday through Friday, 10 a.m.  
p.m. Saturday and noon to 4 p.m.  
ay.

# 'Fictitious Flora' exhibit by Calderwood explores gender

RACINE — "Fictitious Flora" by Jessica  
Calderwood will be on display Aug. 5-Jan.  
23 in the Windows on Fifth Gallery at  
Racine Art Museum, 441 Main St. An  
artist reception will be held at 6:30 p.m.  
Friday, Aug. 5. Calderwood will give  
visitors a behind-the-scenes glimpse at  
the making of "Fictitious Flora" with Lena  
Vigna, RAM curator of exhibitions.

"Fictitious Flora" includes provocative  
two- and three-dimensional works  
that reflect Calderwood's interest in  
investigating gender, symbolism and the  
issues of aggression, peace and social  
responsibility. Made of enamel, felt,  
polymer, vitreous china and porcelain,  
her 4-foot-tall figures — adorned with  
deftly constructed floral forms and her  
translation of handguns into flat images  
of pattern and color — address complex  
cultural topics, such as the relationships  
between the beautiful and the absurd,  
the powerful and the powerless and the  
feminine and the masculine.

Working with a palette of pastels,  
primarily pinks and baby blues as they  
have a cultural connection to gender,  
Calderwood translates flowers and guns  
into design elements of pattern, color  
and form. With the combination of  
symbols, she purposefully references  
floral arrangements, mandalas and funeral  
wreaths as they can evoke things that  
are both related to the ornamental and  
the beautiful, but also as symbols of  
aggression.



Bloom by Jessica Calderwood is made of  
earthenware, fiberglass, enamel, copper, silk,  
plastic and milk paint.

RAM is open from 10 a.m. to 5 p.m.  
Tuesday through Saturday and noon to  
5 p.m. Sunday. Admission is \$5 for adults,  
and \$3 for youth ages 12-18, full-time  
students and seniors 63 and older. There  
is no charge for ages 11 and younger.