

# MutualArt.Com

USA / Racine : Exhibition

## Lost and Found: Featuring Kim Alsbrooks and Nikki Couppee

[✉ Contact the Venue](#)

at [Racine Art Museum](#)

Sep 25, 2015 - Jan 3, 2016



This exhibition underscores the ability some artists have to decontextualize the marginalized or overlooked, and to imbue the ordinary with something extraordinary. Works made of found materials from RAM's collection are combined with the work... [Read More](#)

[▶ Presenting Artists](#)

[▶ Event Information](#)

[▶ Contact Details](#)

### Presenting Artists

[Kim Alsbrooks](#)

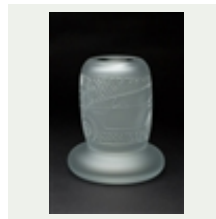
[Nikki Couppee](#)

### Area Map and Address

441 Main Street, Racine, Wisconsin, USA



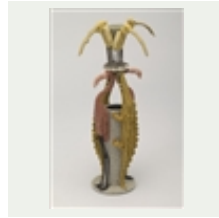
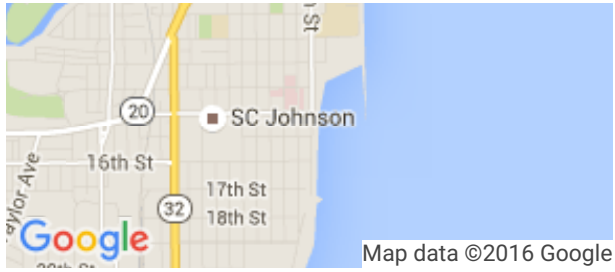
### While in Racine



USA / Racine : Exhibition  
[Contemporary Glass at RAM: The Daniel...](#)  
Racine Art Museum  
Jul 12, 2015 - Jan 24, 2016



USA / Racine : Exhibition  
[RAM Collects Contemporary Polish Fiber Art...](#)  
Racine Art Museum  
Oct 18, 2015 - Feb 7, 2016



USA / Racine : Exhibition

Standing on Ceremony  
Functional Ware from...

Racine Art Museum

Oct 18, 2015 - Feb 7, 2016

---

## About the Event

---

This exhibition underscores the ability some artists have to decontextualize the marginalized or overlooked, and to imbue the ordinary with something extraordinary. Works made of found materials from RAM's collection are combined with the work of two featured artists. Kim Alsbrooks emblazons found trash, such as aluminum cans, with detailed oil and graphite portraits of historic figures. Interested in the connection between adornment and social status, Nikki Coupee uses found objects, Plexiglas, and bras to create jewelry that appears opulent even though it is made of non-precious elements.

0 Comments

Sort by



Add a comment...

---

 Facebook Comments Plugin

Copyright © 2016 MutualArt Services, Inc.

All rights reserved.