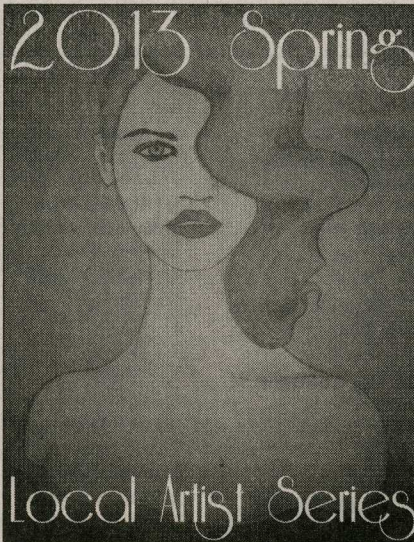
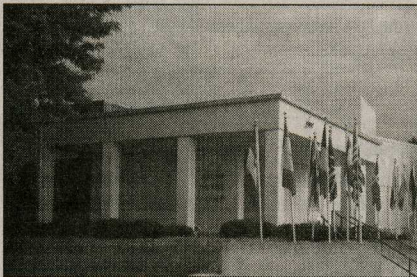


**community**  
**bulletin board**

**Musical Theatre Dance**

The Racine Theatre Guild, 2519 Northwestern Avenue (Highway 38), is accepting registrants for the class, "Musical Theatre Dance." Students will be able to get moving and have a blast with dance styles frequently seen on the musical theatre stage and will become versed in fundamental ballet, tap, and jazz steps. No prior dance experience necessary, but students will need ballet or jazz shoes. All students must be 16-years-old or older. Class is held on Tuesdays from 6:30-8 p.m., and runs from February 26th through April 9th. Registration fee is \$80. To enroll, call the box office at 262-633-4218 or visit the Racine Theatre Guild, weekdays from 12 to 6 p.m. There is a discount of \$10 per class for households registering for two or more classes per term.



**Local Artist Series**

Envi Ultra Lounge, 316 Main Street, presents it's inaugural Local Artist Series, with a Spring 2013 Showing. The work of local artists will be on display at the lounge throughout the upcoming months. A reception for the artists will be held from 6:00-9:00 p.m on Feb. 22. The public is invited to meet the artists and view their work. Complimentary hors d'oeuvres will be served, and all artwork will be on sale for the duration of the exhibition. Ten percent of the proceeds from sales during the reception will be donated to the Racine Arts Council. For more information, please call 262-770-4297 or visit [www.enviultralounge.com/events](http://www.enviultralounge.com/events).

**"Shades of Grey" At The Racine Art Museum**

During the winter months of 2013, the Racine Art Museum (RAM), 41 Main Street, will feature a series of exhibitions that showcase work dominated by a black and white color scheme. Artists whose works are featured in these exhibitions limit the use of numerous colors, yet create dynamic and thought provoking compositions. Open February 17 through May 12, "Shades of Gray: Black and White Graphics from RAM's Collection" features prints and artist's books dating from the early twentieth century to the present day. The show includes selections from Wisconsin and New York-based artists working with the federal government's WPA (Works Progress Administration) arts-based programs during the Great Depression in the 1930s. "Shades of Gray" presents landscapes, figural studies, abstractions, and stories told through both image and text. Viewers are invited to explore formal elements as well as the symbolic and metaphoric potential of color. Both campuses of the Racine Art Museum, are open to the public Tuesday - Saturday 10:00 a.m. - 5:00 p.m., and are closed Mondays. RAM is open Sunday Noon - 5:00 p.m. An admission fee of \$5 for adults, with reduced fees for students and seniors, applies at RAM. For more information, please call 262-638-8300, or visit <http://www.ramart.org/>.

**HAVE A LOCAL EVENT? FAX: (262) 605-8255, OR EMAIL TO: [press@happeningsmag.com](mailto:press@happeningsmag.com)  
OR MAIL YOUR PRESS RELEASE TO: 1420 63RD STREET, KENOSHA, WI 53143**  
**For More Local Events, Check Out The Smart Shopper And Its Daily Events Calendar!**  
*Due to the large number of submissions, we cannot guarantee all events will appear in print.*

**Now Open In  
2 Locations!**  
**\$18  
EYEGLASSES  
PLACE**

**WE ALSO CARRY LENSES THAT GO LIGHT TO DARK,  
5 TYPES OF THINNER LENSES AND MUCH MORE!**

**When It Comes To Your Vision,  
Don't Make Sacrifices**  
**Save Your Money & Protect Your Eyes!**

**Contacts Cheaper  
Than 1-800-Contacts!**

\* Must have valid contacts Rx

**8003 12th St. • Somers | 3701 Durand Ave. • Racine**

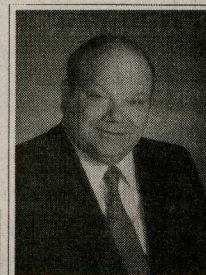
**Nationally Board Certified  
Elder Law Attorney  
Timothy P. Crawford**

CALL NOW FOR YOUR FREE CONFERENCE!

OR

A FREE SPECIAL REPORT  
ON "HOW TO PROTECT YOUR HOME & ASSETS"

**PROTECT YOUR HOME & ASSETS FROM  
THE NURSING HOME CARE COSTS BEFORE  
IT IS TOO LATE!**



Attorney Timothy Crawford

Georgia McMullen 2506 LaSalle

ASSET PROTECTION PLANNING BY A  
NATIONAL BOARD CERTIFIED ELDER LAW ATTORNEY