

Contemporary Glass Sculpture

Celebrating the 50th Anniversary of Studio Glass

You still have a chance to catch some of the 160 exhibitions nationwide honoring the studio glass movement, commonly considered to have been born in 1962 in a series of workshops at the Toledo Museum of Art, organized by glass artist Harvey Littleton. The movement transformed glass from a utilitarian and decorative material into a powerful medium for artistic expression. Here is a selection:

Cutting Edge: RAM Explores Contemporary Glass Jewelry

Through February 17, 2013

Racine Art Museum, Racine, Wisconsin
262/638-8300, ramart.org

The Legacy of Littleton: Harvey Littleton and His Students

Through February 24, 2013

Bergstrom Mahler Museum,
Neenah, Wisconsin
920/751-4658
bergstrom-mahlermuseum.com

Playing with Fire: Artists of the California Studio Glass Movement

Through March 24, 2013

Oakland Museum of California
510/318-8400, museumca.org

New Artifacts: Works by Brent Kee Young and Sungsoo Kim

Explores diverging glassmaking techniques by the two artists, emphasizing classic and ordinary forms.

Through April 7, 2013

Akron Art Museum
330/376-9185, akronartmuseum.org

Studio Glass in Focus: Dialogue and Innovation

Works by early pioneers of the studio glass movement through today's artistic innovators.

Through April 14, 2013

Cleveland Museum of Art
216/421-7350, clevelandart.org

Playing with Fire: 50 Years of Contemporary Glass

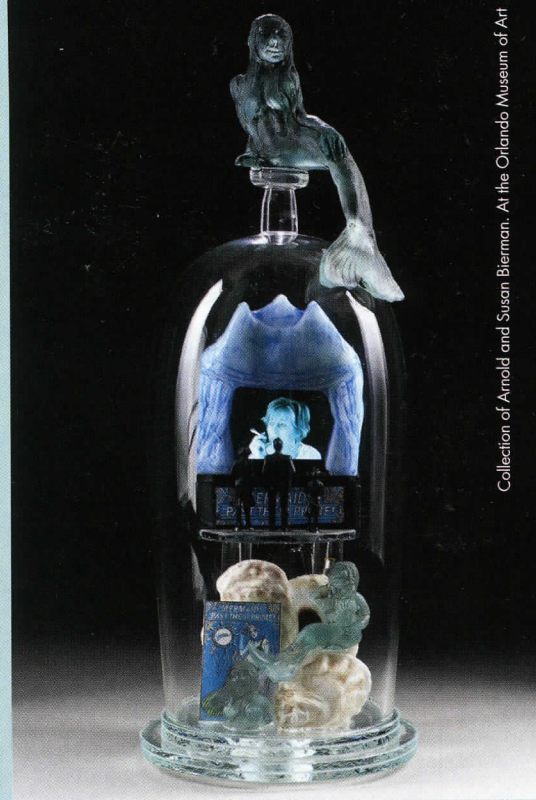
Through April 7, 2013

Museum of Arts and Design, New York
212/299-7700, madmuseum.org

The Studio Glass Movement, 1962-2012

Ongoing

Los Angeles County Museum of Art
323/857-6000, lacma.org



Above William Morris, *Suspended Artifacts*, 1996, blown and formed glass, steel stand. At the Orlando Museum of Art.

Left Elsa Freund, *Bracelet*, 1961, glass, sterling silver, and glazed stoneware. At the Racine Art Museum.

Contemporary Glass Sculpture

Work by renowned and upcoming glass artists.

December 22, 2012 – March 31, 2013

Orlando Museum of Art, Orlando, Florida
407/896-4231, omart.org



Courtesy Racine Art Museum. Gift of Betty Gregg Black.

MARYLAND

Matisse's Dancers

Through February 24, 2013

Baltimore Museum of Art
443/573-1700, artbma.org

MASSACHUSETTS

The Postcard Age: Selections from the Leonard A. Lauder Collection

Through April 14, 2013

Art in the Street: European Posters

Examples from the 1920s to the 1940s.
Through July 21, 2013

Museum of Fine Arts, Boston
617/267-9300, mfa.org

NEW YORK

Tokyo 1955-1970

Painting, sculpture, photography and film.
Through February 25, 2013

Goldfinger: The Design of an Iconic Film Title

The title sequence from the 1964 movie.
Through March 31, 2013

Inventing Abstraction, 1910-1925

A celebration of the centennial of abstract art.
December 23, 2012 – April 15, 2013

Wait, Later This Will All Be Nothing: Dieter Roth Editions

The artist's innovative, prolific period from 1960 to 1975, including an expanded display of the artist's book *Snow* (1963-69).
February 13 – June 24, 2013

Museum of Modern Art, New York
212/708-9400, moma.org

Sinister Pop

Examples of a dark, dystopic pop art created during the tumultuous 1960s and the 1970s.
Through Spring 2013

Whitney Museum of American Art, New York
212/570-3600, whitney.org

Echoes of Silence

Philip Trager Early Photographs, 1967-83
Through February 17, 2013

New York Public Library
917/275-6975, nypl.org

Hammer, Chisel, Drill: Noguchi's Studio Practice

Photographs of the sculptor at work.
Through April 28, 2013

Noguchi Museum, Long Island City
718/204-7088, noguchi.org