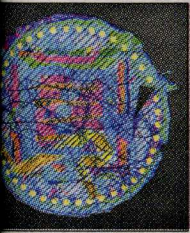


ART

is artist of month



Edwin Kalke art

images to enhance the original colored paper surface. I often use collage, a wax resist batik technique, hand tinting and relief stamping to push the image's development to a completed visual statement."

Kalke has shown his work regionally and nationally. He has led teaching workshops and various conference presentations throughout

the country. Kalke's work is in numerous private collections and many regional and national museums.

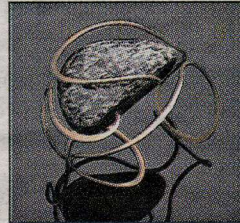
The evening will also mark the opening of the gallery quarterly changeover with all new works by member artists and presented in a whole new floor plan. Artists Gallery is open from 11 a.m. to 5 p.m. Wednesday through Saturday, and from 1 to 4 p.m. Sunday. For more information, go to: www.artistsgallery-racine.com.

Racine Art Museum exhibit features artwork created with glass

RACINE — The Racine Art Museum, 441 Main St., announces the opening of a second show organized this year that focuses on artwork created with glass. These exhibitions reflect RAM's participation in the nationwide 50th anniversary of the studio glass movement in America.

The work of more than 20 artists is featured in "Cutting Edge: RAM Explores Contemporary Glass Jewelry," open through Feb. 17. This show highlights work by artists from around the world who use a variety of techniques — from glass blowing to casting to beadwork — in the creation of jewelry.

Following a historical precedent for using glass in adornment, contemporary artists create art jewelry that underscores the aesthetic and theoretical potential of this ancient material. Cutting Edge represents the intersection of two important elements of artistic production — art jewelry and glass.



This bracelet made of glass, glazed ceramic and sterling silver was made by Elsa Freund in 1961.

Whether engaging with long-standing traditions, such as producing millefiore beads, or using glass in equally compelling, yet inherently modern, conceptual frameworks, these artists emphasize the flexibility and variability of glass as a medium for expression.

While given more attention recently, art jewelry made using glass represents an important yet sometimes overlooked element of contemporary glass. Cutting

Edge highlight artists who regularly use glass in their work and consistently address the medium in their practice.

Earthenware and fused glass jewelry by modern maker Elsa Freund will add historical dimension.

The Racine Art Museum is open from 10 a.m. to 5 p.m. Tuesday through Saturday, and from noon to 5 p.m. Sunday. Admission is \$5 or \$3 for youth ages 12-18, full-time students and seniors ages 63 and older. There is no charge for children ages 11 and younger.

Muses of Mirth artists to show work

RACINE — The Muses of Mirth, a group of women artists who meet once a week for inspiration, friendship and education relating to each individual's artistic interests and venues, will exhibit their work in a show Nov. 2-Dec. 22 at the Racine Arts Council, 316 Sixth St. An opening reception will be held from 6 to 9 p.m. Friday, Nov. 2, during First Fridays.

A Muse is a goddess of art and

creativity. Mirth is gaiety accompanied with laughter. The artists in this winter exhibition have additional dimensions of mirthful hilarity and joy in their creative gatherings and in much of their art. The exhibit includes paintings on canvas, collage, ceramics, jewelry, lamps and wearable silk art. Artists include Bobby Childers, Terry Evans, Monne Haug, Mary Mollerskov and Jurga Petkus.

Visitor Center plans open house Friday

KENOSHA — The Kenosha Area Convention & Visitors Bureau will hold a First Fridays open house from noon to 3 p.m. Friday, Nov. 2. Fall travelers taking a break from the road and local residents alike are invited to the I-94 Visitor Information Center, 10519 120th Ave. (I-94 and Highway 165).

Featured exhibitors include Pleasant Prairie Premium Outlets with Pepperidge Farm, Kenosha Public Museum, Dinosaur Discovery Museum, Civil War Museum, Holiday Inn Express, Brat Stop, Value Inn and Rustic Road Brewing Co.

For more information, go to: www.KenoshaCVB.com.

20302510

for HAPPY HOUR!!

Imported Beer

Los Mariachis
THE PLACE TO GO FOR THE TASTE OF MEXICO!

N AVE., RACINE • 884-0700