

Racine and Vicinity Show: All Media Juried Competition

June 4–August 27, 2011



R|A|M

**Racine and Vicinity Show:
All Media Juried
Competition**

Works marked NFS are not for sale or are collection of the artist.

Mary Abbott

Mushroom Gatherers, 2009

Oil \$875

June Ambro

The Three Graces, 2009

Ceramic NFS

Robert W. Andersen

Sylvania, 2010

Linoleum print \$150

Chris Andrews

Three to a Box, 2010

Bronze NFS

Gabrielle Bakanec

In Hindsight, Happier Then, 2011

Collage \$75

Dennis Bayuzick

Last Laughs, 2010

Oil \$1,200

Jerrold Belland

Trees on Yellow Ground, 2010

Acrylic \$800

Richard Berns

Shadowcast, 2011

Oil \$1,400

Young Girl on Swing, 2011

Intaglio \$260

Lisa Bigalke

Castle, 2010

Relief print \$175

Winter Farm on Route 5, 2010

Mixed media \$170

(cover)

Richard Berns

Young Girl on Swing, 2011

Intaglio

(right)

James Kipfer

Hartford City Stairs, 2010

Platinum/palladium print





Maureen Fritchen
Full Circle, 2010
 Mixed Media

Kathy Brand
Mother & Child, 2010
 Digital inkjet print

\$150

Janet Falk
Eggs I, 2010
 Merino wool

\$65

Karen Brittain
Here, 2011
 Acrylic

\$600

Julianne Feiler
Full Bloom, 2010
 Acrylic

\$500

Bob Grno

MOMA 1, 2010
 Digital inkjet print

\$150

Paul Brnak
Dead Bird, 2010
 Toned silver gelatin print

\$200

Maureen Fritchen
Full Circle, 2010
 Mixed media

\$1,400

G.D. Holding

Chaos and Creation, 2011
 Encaustic and leaves

\$300

Jane Cascio
Shoreline, 2010
 Pastel

\$575

Dian Gabriel
Sibling Rivalry, 2009
 Watercolor and collage

\$1,200

Andrew J. Hendricks

Maturity, 2010
 Recycled wood
 and prisma color

\$200

Jean Chars
Adorned, 2009
 Ceramic and glass beads

NFS

Abby Garner
Hanna's Room, 2009
 Glass

NFS

Repurposed, 2010

Recycled wood
 and prisma color

\$200

Sharon Christensen
Our Farm with Bee Balm, 2010
 Watercolor

\$290

David Garner
Hanna, 2009
 Chalk

NFS

Valerie Hernandez

When Momma's Sleeping, 2010
 Intaglio

\$35

Doug DeVinny
Faces Unfolding, 2010
 Color digital engraving

\$750

David Gaura
The Inner Workings, 2011
 Steel, stainless steel,
 and glass

\$1,000

Helga Hilbert-Robinson

A Child's Verse – Part I, 2009
 Acrylic

\$950

Katie Dylewski
Slaughter Man, 2009
 Oil

\$775

Arthur L. Grebetz
Tranquil Beginning, 2009
 Oil

NFS

Don Hinrichs

A Cloud Happening, 2011
 Acrylic

\$275

Joyce Eesley
Pink Rose Reflection, 2010
 Transparent watercolor
Shiny Reflections, 2011
 Transparent watercolor

\$275

\$450

Gary John Gresl
Document Ephemera,
The Landing, Flow #1, 2010
 Digital inkjet print

\$350

Morning Chill, 2010

Watercolor

\$250

Candace Hoffman

Looking into Crystal Ball, 2011
 Embroidery

\$1,000

Lisa Englander
Perennial Epiphytic I, 2011
 Watercolor

NFS

Chet Griffith
Beatrice, 2011
 Graphite

\$425

Janet S. Hoffman

Beach Volley Ball, 2011
 Oil

\$450

Katie Dylewski
Slaughter Man, 2009
Oil



David V. Holmes

Dragon Fly Conundrum, 2009

Acrylic and collage \$2,000

Mary Shelley, 2009

Acrylic and collage \$2,000

Dave Jay

The Fog Was Thick as Pea Soup, 2010

Digital inkjet print \$325

Edwin Kalke

Detritus II, 2011

Etching \$150

Heidi Keyes

Rainy Day Girl, 2009

Acrylic \$375

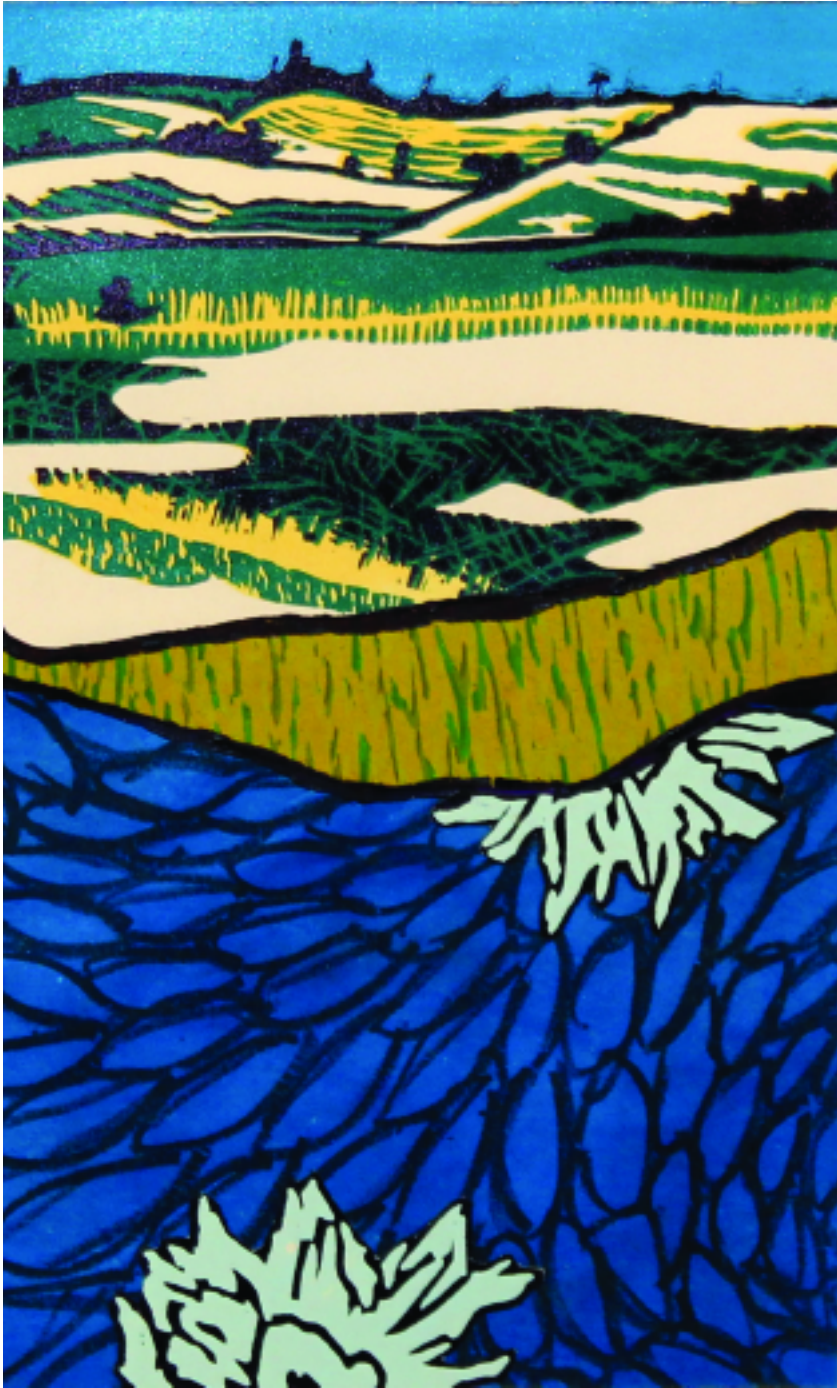
James Kipfer

Hartford City Stairs, 2010

Platinum/palladium print \$500

Tiffany Knopow <i>Dryer Rolls</i> , 2009 Dryer lint	\$150	Anne Miotke <i>Drawing Insights</i> , 2010 Watercolor	\$1,300
Jeff Kosmala <i>Farm Near Weeks Road</i> , 2010 Acrylic	\$175	<i>Mother–Daughter Tea</i> , 2009 Watercolor and titanium casein	\$6,750
Marna Glover Krueger <i>Tessellated Tapestry</i> , 2010 Glass	NFS	Helen Napier <i>Continuance</i> , 2011 Watercolor pencil	\$350
Marj Lacock <i>Captured Sea Glass</i> , 2011 Sterling silver, copper, and sea glass	NFS	Sr. Jaye Nelson <i>3 Ukrainian Eggs</i> , 2010–2011 Trypillian, wax resist, and eggshell	NFS
<i>Pearls in Pod</i> , 2011 Brass, copper, and pearls	NFS	Gary Warren Niebuhr <i>Wylie Dreams of his Future</i> <i>While on Life Support</i> , 2011 Mixed media	\$250
Matthew LaCour <i>Ice Crush</i> , 2010 Silver gelatin print	\$110	Bruce Niemi <i>Suzi's Garden Series</i> , 2010 Stainless steel, bronze, and slate	\$4,700
Kathleen Laybourn <i>Good Mommie/Bad Mommie</i> , 2011 Encaustic	\$425	Joyce Ottum <i>Sunday in the Park</i> <i>with George</i> , 2011 Watercolor	\$250
Diane Levesque <i>Origin and Cause</i> <i>of Every Delight</i> , 2010 Acrylic	\$4,000	Kevin Pearson <i>Raku Bowl</i> , 2009 Raku	NFS
Victoria Lilla <i>Every Witch Way</i> , 2011 Watercolor	\$350	Leslie Perrino <i>Electro Rain Chain</i> , 2010 Enamel, copper, and vacuum tubes	\$450
Maggie Peg Lukow <i>Dawn</i> , 2011 Mixed media	\$200	Lyle Peters <i>Merlin's Barn</i> , 2011 Watercolor	\$625
Jason Madson <i>Peaceful Creation</i> , 2011 Digital inkjet print	\$500	Jan Petersen <i>Old Man</i> , 2011 Pastel	NFS
Alex Mandli, Jr. <i>Covered Jar</i> , 2010 Saggur-fired white earthenware	\$400	Kate Pietri <i>It's All About Me</i> , 2010 Wool and silk	NFS
Mary McEneely <i>Golden Girl</i> , 2010 Pastel	\$400	Stacey Piper <i>Factory Cocks</i> , 2010 Relief print	\$145
Sally G. Miller <i>Desert Flowers I</i> , 2011 Digital inkjet collage	\$110		
<i>Windows and Doors I</i> , 2011 Digital inkjet collage	\$110		

Racine and Vicinity Show at RAM's Wustum Museum includes 117 pieces by 103 regional artists and RAM members, selected from a total of 504 works submitted by 210 artists.



JoAnna Poehlmann
Empty Nest, 2010
 Graphite, watercolor, xerograph,
 and collage \$350
Some Day My Prince
Will Come and Go
and Vanish and Return, 2010
 Graphite, watercolor, xerograph,
 and collage \$350

H. June Pomatto
Along the Shores
of Lake Michigan, 2009 \$300
 Acrylic

Lance Raichert
She Puppet, 2010
 Ink NFS

Lisa Bigalke
Winter Farm on Route 5, 2010
 Mixed media

Lynne Railsback
Rattlesnake-root, 2010
 Watercolor \$750

Bill Reid
Emoceanal Woement
at the Mobygone Round, 2010
 Steel and paint \$1,600

Mary Rhomberg-Spengler
Untitled, 2011
 Clay \$100

Michelle Rial
Reversal in Flight, 2011
 Glass \$1,200

Janet Roberts
The American Dream Revisited, 2011
 Oil and collage \$1,500

Mary Sabol
Dinner Plate Dahlia and Friends, 2011
 Graphite \$250

Maggie Sasso
Tools of Unknown Origin, 2010
 Brass, wood, paint,
 and found objects \$500

Phil Schultz
Approaching God, 2011
 Oil \$250
Lug Nuts, 2010
 Bronze \$1,000

Suellyn Scoon
Child with Geese, 2011
 Oil \$900

Pamela Smiley
My Dad Drinks and Watches TV, 2009
 Acrylic and watercolor \$150

Amy Misurelli Sorensen
I Want to be a Real Boy, 2010
 Graphite and gouache \$600

Susan M. Sorenson
Countdown, 2011
 Acrylic NFS

Louise Sliv
RR4, 2011
 Oil NFS

Rusty Stirle

Jelly, 2011
Canvas and glass beads NFS

Jason Swanson

Natural Edge Box, 2010
Wood \$200
Salt/Peppermill Set, 2009
Wood \$600

Ken Swanson

Room with Green Chair, 2009
Linoleum block print \$500

Alex Tompsett

Heavy Lite, 2010
Glazed ceramic \$3,200
Mask Belief, 2010
Acrylic and mixed media \$850

Laura Underwood

Twenty Trees, 2011
Acrylic \$750

Randall Underwood

Muscle Beach, 2010
Digital inkjet print NFS

Greg Uttech

Indigo Spirit, 2011
Watercolor \$700

Bryanna VanCaster

Purple Phase, 2011
Cotton and cosmetics \$225
Whispering, 2010
Cotton \$190

Rebecca Venn

Javelin II, 2009
Graphite \$2,850

John Vlaj

Egret, 2011
Watercolor \$900

Sandra Wagner

A Study in Orange and Pink, 2010
Transparent watercolor NFS

Priscilla Weissenfluh

Paired, 2010
Watercolor \$700

Randy Wesner

Petrified, 2011
Glass \$225
A Stroke of Insight, 2011
Glass \$1,500

Rochelle Whiteman

Five Flights of Fancy, 2009
Burlap and cotton NFS

Susie Williams

Protea 1, 2010
Watercolor NFS

Sue Wolff

Maggie, 2011
Watercolor NFS

Sherri Myers Wray

State Fair Baby, 2010
Watercolor \$125

Jessica Zalewski

Reclaimed, 2010
Digital inkjet print \$300

Timothy Zeszutek

Impact, 2011
Dry print NFS

William Zweifel

Empathy, 2011
Glass and bronze \$5,400

Awards**\$200 Merit Awards**

Richard Berns, *Young Girl on a Swing*

Jean Chars, *Adorned*

Katie Dylewski, *Slaughter Man*

Sue Wolff, *Maggie*

\$100 Merit Awards

Maureen Fritchen, *Full Circle*

James Kipfer, *Hartford City Stairs*



Jean Chars
Adorned, 2009
Ceramic and glass beads



Exhibition juried by Graeme Reid
Assistant Director, Museum of Wisconsin Art
West Bend, Wisconsin

Catalogue layout and photography
by Jessica Zalewski, Racine Art Museum

This exhibition at RAM's Wustum Museum
is made possible by:

Presenting Sponsors

Karen Johnson Boyd and William B. Boyd
RAM Society Members
Jay Price Ruffo
S.C. Johnson & Son, Inc.
The Hearst Foundation, Inc.
Windgate Charitable Foundation

Gold Sponsors

Helen Bader Foundation, Inc.



Racine Community Foundation, Inc.
Racine United Arts Fund



Silver Sponsors

Cotsen Foundation for Academic Research
W.T. Walker Group, Inc.

Bronze Sponsors

Clifton Gunderson LLP
CNH America LLC
E.C. Styberg Foundation, Inc.
Friends of Fiber International
In Sink Erator
Knight-Barry Title, Inc.
Real Racine

Sue Wolff

Maggie, 2011
Oil

RAM's Wustum Museum of Fine Arts

2519 Northwestern Avenue
Racine, WI 53404
262.636.9177
www.ramart.org

© 2011 All rights reserved.

R|A|M